

# Maximum Total Eclipse 2:40



## Drivesheds of the Great American Eclipse

A watershed is the basin spanned by drops of water flowing to a low point

A driveshed is where cars can drive the quickest route to a destination in the path of totality



Great  
American  
Eclipse.com

These are the drive paths from every county in the USA to the closest point in the path of total solar eclipse as computed with advanced GIS analysis.

# Information Campaign Directed at Specific Groups

---

- Joint KYEM-KYTC General Release
- Business
- Truckers/travelers
- Local Residents
- Eclipse Watchers Coming to Visit
- Traffic Monitoring & Reports



er.com

WEDNESDAY, AUGUST 16, 2017

Madisonville, Kentucky

\$1

Madisonville and Hopkins County, Kentucky Since 1917 270-824-3300

ctive' message



# Eclipse visitors will impact cell service, internet

Companies say callers may get busy signals, web traffic may slow

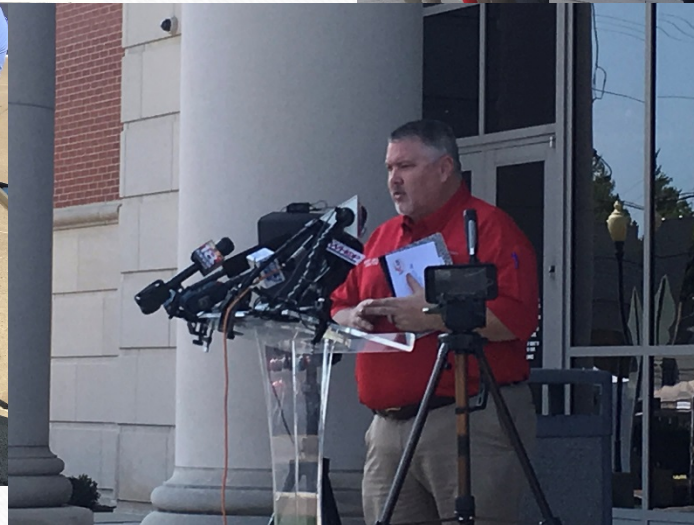
BY LAURA HARVEY  
LEAD REPORTER  
L.HARVEY@THE-MESSENGER.COM

When thousands of people suddenly converge into a relatively small area at the same time, they often find it difficult to find a place to sit or stand in competition for a seat or a spot.



MADISONVILLE

# Friday News Briefing



## Best One-line Interview Quotes

---

- When you pack for your trip include a 5 gallon bucket of patience
- This is like the Super Bowl, but without a stadium

## Quote of the Event

---

In the end, we were grossly overprepared. I will never apologize for being grossly overprepared.

--Curt Curtner, Marshall Co. Emergency Mgt. Dir.

## 2<sup>nd</sup> Quote of the Event

---

Anytime you try to predict human behavior you're just asking for trouble.

--Keith Todd



# Preparing for the Unexpected

## Expectation

- Up to 500,000 guests
- Arrival over 3 days
- Increased traffic on streets, in restaurants & stores
- No school

## Reality

- About 300,000 guests
- Traffic congestion on Monday upon exit only
- Most visitors drove in Monday morning
- Locals stayed home

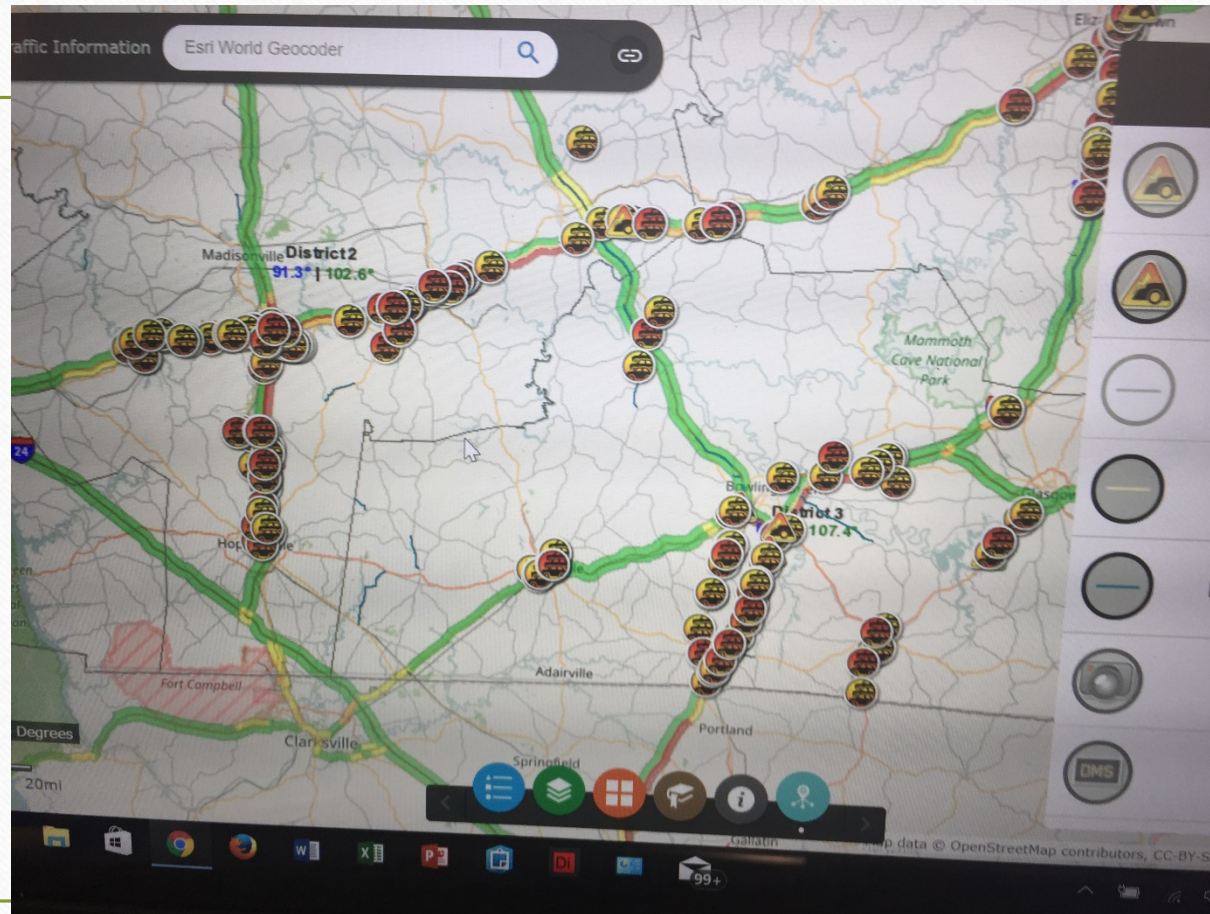
# Biggest Surprises?

Local residents stayed home to avoid the anticipated traffic crunch

Worst traffic snarl was at the Interstate 69/Western Kentucky Parkway/Pennyrile Parkway interchange

10-mile backup on the Pennyrile Parkway.

# WAZE/Google Traffic Map 3:21 p.m., CDT



# I-24 Maximum Traffic Count 40,000 Vehicles Per Day

---



# Biggest Surprises?

Traffic counts showed an immediate jump as people headed home from their eclipse adventure.

The Pennyrite Parkway north of Hopkinsville normally carries 14,800 vehicles per day. On Aug. 21, it carried 23,927 vehicles – a 60 percent jump in traffic for the day.

U.S. 31E in Hart County – +222 percent – Biggest Single Jump

U.S. 641 – Marshall County +43 percent

U.S. 62 – Grayson County +123 percent

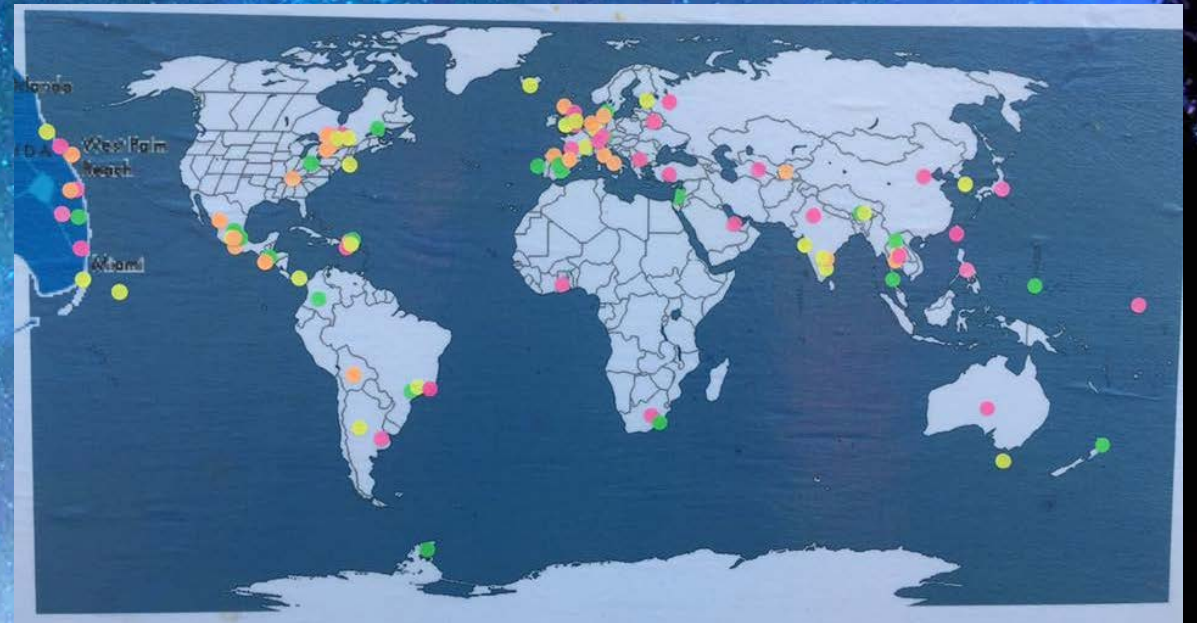
I-65 – Warren County +44 percent

I-24 – Lyon County +37 percent

U.S. 68 – Logan County +122 percent

# How Far the Message Reached

- Visitors from approximately 47 states, 25 countries



# Special Thanks

---

- NASA
- <http://www.kentuckytourism.com/eclipse/eclipseevents.aspx>
- <http://www.eclipseville.com>
- <http://www.starnetlibraries.org/EclipseGuide/>
- <http://nationaleclipse.com/>
- <https://www.greatamericaneclipse.com/>